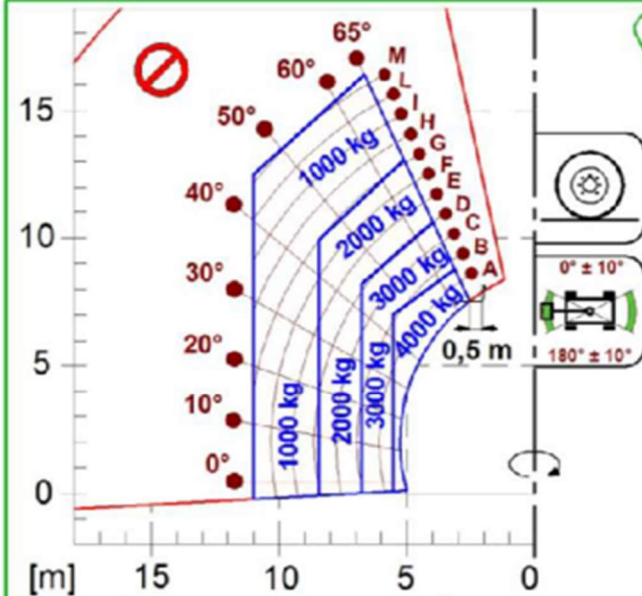
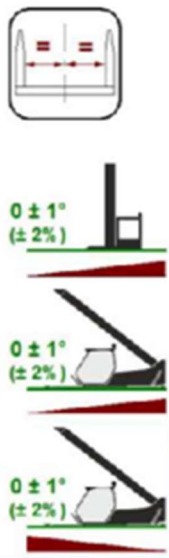
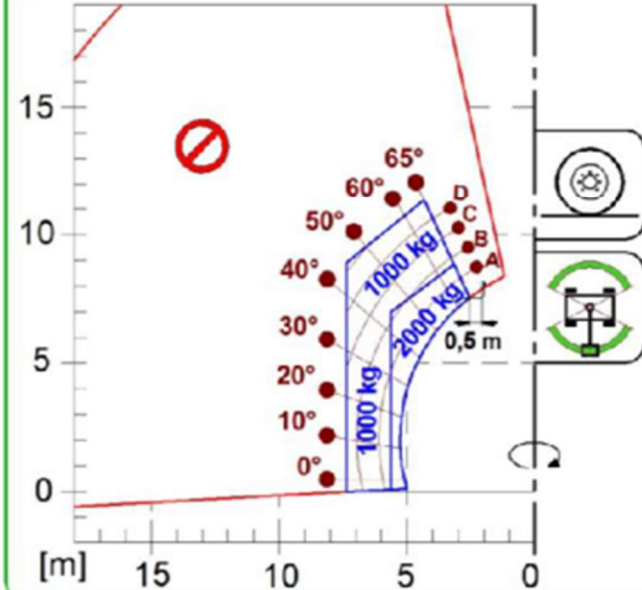
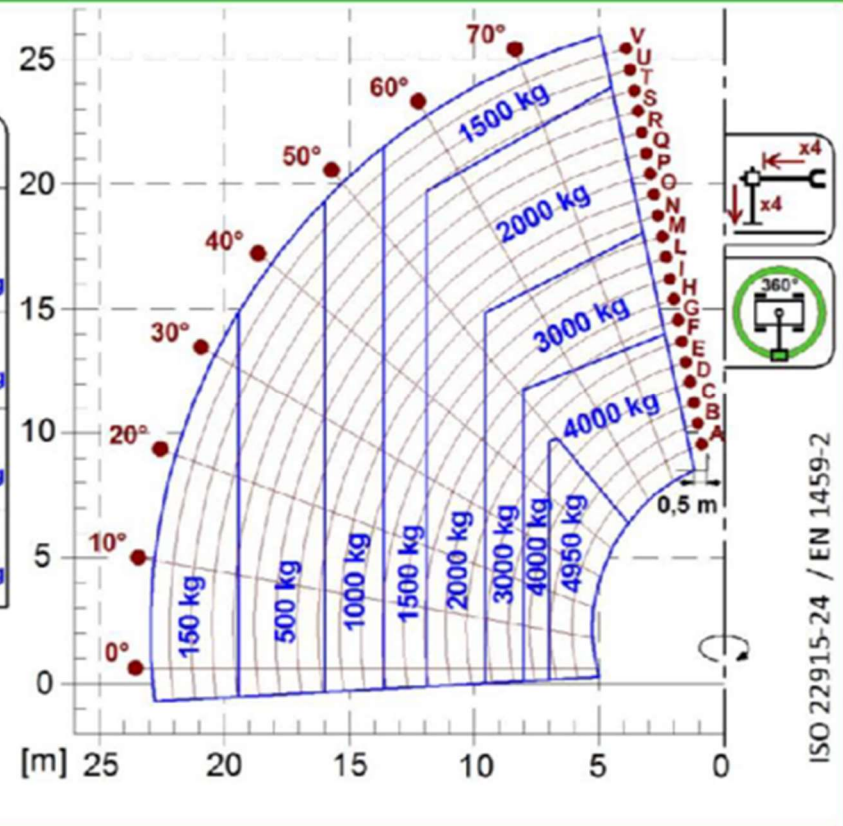


# MERLO ROTO50.26



A0311		
A0200+A0500		
A0201+A0500		-200 kg MAX
A0210+A0500		4500 kg
A0211+A0500		4500 kg
A0100+A0500		-150 kg MAX
A0291		-150 kg MAX
A0292		4000 kg
A0293		-100 kg MAX
A0294		1500 kg



ISO 22915-24 / EN 1459-2